

LNS INDONESIA

TOOLS & EQUIPMENTS CATALOGUE

PT. LNS INDONESIA

📍 Margomulyo Jaya B-22, Jl Sentong Asri, Margomulyo- Surabaya 60186

☎ Phone: +62 31 7484280 | Fax: +62 31 7484281

✉ info@lns.co.id

🌐 www.lnsindonesia.com

TABLE OF CONTENTS ELECTRICAL TOOLS

OMICRON CPC-100 - PRIMARY INJECTION	01
OMICRON CP Cb2 - CURRENT BOOSTER	01
OMICRON CMC 356 - SECONDARY TEST	01
HIGH VOLTAGE PTS 75F5 - DC HIPOT/MEGOHMMETERS	01
METREL MI3252 - MICROOHM 100A	02
FLUKE 1653B - MULTIFUNTION INSTALLATION TESTER	02
KYORITSU 3125 - HIGH VOLTAGE INSULATION TESTER	02
LLT1-11KV MODEL FOP01B/2 - LIVE LINE TESTER	02
KYORITSU 4120A - LOOP / PSC TESTER	03
KYORITSU 3007A - INSULATION/CONTINUITY TESTER	03
FLUKE 1621 - GEO EARTH GROUND TESTER	03
KYORITSU 4105A - DIGITAL EARTH TESTER	03
FLUKE 43B - SINGLE PHASE POWER QUALITY ANALYZER	04
KYORITSU 6310 - POWER QUALITY ANALYZER	04
EXFO FPM 300 - POWER METER	04
TIME ELECTRONICS 1051 - LOW OHM RESISTANCE BOX	04
SEAWARD TRUE RMS DIGITAL AMMETER	05
FLUKE-9040 ESPR PHASE ROTATION INDICATOR	05
FLUKE-789 PROCESS METER	05
FLUKE-1587/1577 INSULATION MULTIMETER	05

PT. LNS INDONESIA

 Margomulyo Jaya B-22, Jl Sentong Asri, Margomulyo- Surabaya 60186

 Phone: +62 31 7484280 | Fax: +62 31 7484281

 info@lns.co.id

 www.lnsindonesia.com

Electrical Tools



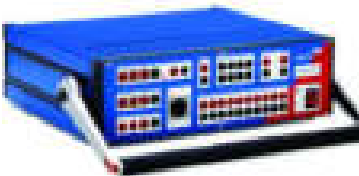
OMICRON CPC-100 - PRIMARY INJECTION

- + Up to 800 A or 2000 V with up to 5 kVA over a frequency range of 15 Hz - 400 Hz or 400 A DC
- + Excellent interference suppression facilitates measurement of small signals
- + Testing templates, automatically generated testing procedures and reports
- + Easy to transport (just 29 kg) - Ideal for on-site testing
- + Up to 2000 A or 12 kV through use of current or voltage amplifiers
- + Electrical tests on lines and cables, transformers, current transformers, voltage transformers, grounding systems, and circuit breakers
- + Qty = 1 Unit



OMICRON CP Cb2 - CURRENT BOOSTER

- + Increase the output current of Omicron CPC 100 up to 2000 A
- + High voltage source can be positioned near the device to be tested
- + Low losses thanks to short, high current cable
- + Application : Primary current injection for current transformer test
Primary current injection for relay test
- + Qty = 1 Unit



OMICRON CMC 356 - SECONDARY TEST

- + Solution for testing all generations and types of protection relays
- + Powerful current sources for testing even high-burden electro-mechanical relays
- + High current amplitudes for 5 A relay testing
- + High accuracy and versatility for testing static and numerical relays of all types
- + Integrated network for testing IEC 61850 IEDs
- + 10-channel analog measurement and transient recording functionality
- + Qty = 1 Unit



HIGH VOLTAGE PTS 75F5 - DC HIPOT/MEGOHMMETERS

- + Power Supply 120 VAC 60 Hz
- + Input(60 Hz/ 50/60Hz) 120V 10 Amps & 230 V, 5 Amps
- + Output 0-75 kVdc, 10 mA
- + Polarity Negative output. Positive ground
- + Duty Continuous, capacitive charging
- + Ripple N/A Capacitive load
- + Regulation Less than 2.5% RMS resistive load
- + Kilovoltmeter < 1% with 10% input line change capacitive load
- + Output Termination 0-37.5/75 kVdc
- + Output Termination Shielded Output cable with clip and boot, 20ft (6m)
- + Qty = 1 Unit

PT. LNS INDONESIA

Margomulyo Jaya B-22, Jl Sentong Asri, Margomulyo- Surabaya 60186

Phone: +62 31 7484280 | Fax: +62 31 7484281

info@lns.co.id

www.lnsindonesia.com

Electrical Tools



METREL MI3252 - MICROOHM 100A

- + Extremely accurate measurements to within 0.25% of reading and resolution down to 1nΩ
- + Able to sustain external voltages in case of wrong connection
- + Automatically detects continuity in current circuit
- + CAT IV 50V protection and weatherproof to IP 64
- + Customisable Pass or Fail limits
- + Memory storage for up to 1000 test results
- + Power Supply : 230/115 VAC
- + Overvoltage category : 50 V / CAT IV
- + Qty = 1 Unit



FLUKE 1653B - MULTIFUNCTION INSTALLATION TESTER

- + Performs Insulation test at 50, 100, 250, 500 or 1000V.
- + Non-trip loop test won't trip out RCDs, and now the B version also includes a high current loop test.
- + Auto RCD test, Ramp test & RCD trip time test with variable RCD current mode for customised settings & Pass / Fail indication
- + PEFC / PSC (PFC / PSCC) & loop measurements are displayed at the same time
- + Qty = 1 Set



KYORITSU 3125 - HIGH VOLTAGE INSULATION TESTER

- + Wide range measurements from 500V to 5000V and up to 1000GΩ.
- + Large digital display with Bar Graph Indication and back light.
- + Polarization Index measurement (PI).
- + Timer measurement function.
- + Indication of Output voltage and Discharge voltage.
- + Auto-discharge function and Voltage output warning function.
- + Qty = 1 EA



LLT1-11KV MODEL FOP01B/2 - LIVE LINE TESTER

- + Measure -30 °C to 900 °C (-22 °F to 1652 °F)
- + 60:1 distance to spot ratio with dual laser sighting for fast, accurate targeting
- + Current Temperature plus MAX, MIN, DIF, AVG temperature displays
- + Compatible with standard mini-connector K-type thermocouples
- + Adjustable emissivity and predefined emissivity table
- + Infrared and thermocouple temperature on backlit display
- + Last reading Hold (20 seconds)
- + High and low temperature alarm
- + USB 2.0 computer interface cable
- + Qty = 1 Unit

PT. LNS INDONESIA

Margomulyo Jaya B-22, Jl Sentong Asri, Margomulyo- Surabaya 60186

Phone: +62 31 7484280 | Fax: +62 31 7484281

info@lns.co.id

www.lnsindonesia.com

Electrical Tools



KYORITSU 4120A - LOOP / PSC TESTER

- + Custom microprocessor controlled for highest accuracy and reliability.
- + 3 LEDs for checking correct wiring status
- + Model 4120A has the automatic RCD (ELCB) lock device
- + Direct reading of PSC and earth fault current
- + Measures low loop resistances (resolution of 0.01Ω)
- + Voltage 110V-260V ±2%rdg±4dgt
- + Operating Voltage 230V+10% -15% (195V - 253V) 50Hz
- + Qty = 1 EA



KYORITSU 3007A - INSULATION/CONTINUITY TESTER

- + Bargraph to display insulation resistance.
- + Displays the value of external AC voltage along with flashing symbol
- + Auto null function to automatically subtract the test lead resistance
- + Trac-Lok mode to conserve battery life on insulation and continuity tests
- + Live circuit warning beeper
- + Releasing the test button automatically discharges the charges stored in the circuit under test
- + Minimum 1mA current on insulation tests to IEC 61557
- + Qty = 1 EA



FLUKE 1621 - GEO EARTH GROUND TESTER

- + Easily capture values with single-button operation
- + 3-pole Fall-of-Potential earth testing for basic measurements
- + 2-pole resistance measurements for added versatility
- + Ensure accurate measurements with automatic 'noise' voltage detection
- + Measuring functions
 - 3-pole earth ground resistance
 - 2-pole ac resistance of a conductor
 - Interference voltage
- + Intrinsic error Refers to the reference temperature range
- + Measuring rate 2 measurements/second
- + Qty = 1 EA



KYORITSU 4105A - DIGITAL EARTH TESTER

- + Measurement

Earth Resistance	0 - 200Ω/0 - 2000Ω/0 - 20000Ω
Earth Voltage [50,60Hz]	0 - 200V AC
- + Accuracy

Earth Resistance	±2%rdg±0.1Ω (200Ωrange)
	±2%rdg±3dgt (2000Ω/20000Ωrange)
Earth Voltage	±1%rdg±4dgt
- + Dust and drip proof, (designed to IEC 529 IP54)
- + Small and lightweight. Shock resistant new case material
- + 2mA measuring current permits earth resistance tests without tripping earth leakage current breakers in the circuit under test
- + Qty = 2 EA

PT. LNS INDONESIA

Margomulyo Jaya B-22, Jl Sentong Asri, Margomulyo- Surabaya 60186

Phone: +62 31 7484280 | Fax: +62 31 7484281

info@lns.co.id

www.lnsindonesia.com

Electrical Tools



FLUKE 43B - SINGLE PHASE POWER QUALITY ANALYZER

- + Extremely accurate measurements to within 0.25% of reading and resolution down to 1nΩ
- + Able to sustain external voltages in case of wrong connection
- + Automatically detects continuity in current circuit
- + CAT IV 50V protection and weatherproof to IP 64
- + Customisable Pass or Fail limits
- + Memory storage for up to 1000 test results
- + Power Supply : 230/115 VAC
- + Qty = 2 EA



KYORITSU 6310 - POWER QUALITY ANALYZER

- + Measures and records the power consumption and power quality of single-phase or three-phase 2-, 3-, or 4-wire circuits for installing
- + Measures current; voltage (including peak values and neutral current); demand; frequency; power factor; phase angle, harmonics; and active, reactive, and apparent power and energy
- + Verifies proper wiring to help ensure measurement accuracy
- + Meets IEC safety standard 61010 & certified for installations up to 600V
- + Includes 128MB compact flash (CF) card
- + Qty = 1 EA



EXFO FPM 300 - POWER METER

- + Highly accurate unit offering 10 calibrated wavelengths and reference values
- + Allows for the testing of passive optical networks (PONs) at 1310 nm, 1490 nm and 1550 nm
- + Power range (dBm) 10 to -60
- + Number of calibrated wavelengths 10
- + Power uncertainty $\pm 5\% \pm 0.1 \text{ nW}$
- + Tone detection 270 Hz, 1 kHz and 2 kHz
- + Automatic wavelength recognition Yes
- + Qty = 4 EA



TIME ELECTRONICS 1051 - LOW OHM RESISTANCE BOX

- + 0.01Ω - 1 MΩ
- + High accuracy
- + Clear visual indication
- + High stability
- + Low temperature coefficient
- + Ideal for RTD/PRT
- + Removable protective boot
- + Qty = 2 EA

PT. LNS INDONESIA

Margomulyo Jaya B-22, Jl Sentong Asri, Margomulyo- Surabaya 60186

Phone: +62 31 7484280 | Fax: +62 31 7484281

info@lns.co.id

www.lnsindonesia.com

Electrical Tools



SEAWARD TRUE RMS DIGITAL AMMETER

- + Moulded plastic head for conductors up to 5.8cm in diameter
- + For use on overhead or underground applications
- + Measured high voltage conductor current flow in a range of 0 to 2000 amps
- + Operating humidity range: 80% RH at 120°F
- + Maximum voltage: up to 36kV AC (phase to phase)
- + Membrane type, tactile response control panel
- + Typical applications include :
 - Spot load surveys, phase balancing on primary and secondary circuits,
 - Monitoring of current flow through high voltage fuses
- + Qty = 1 EA



FLUKE-9040 ESPR PHASE ROTATION INDICATOR

- + Measure phase rotation in all areas where three phase supplies are used to feed motors, drives and electrical systems
- + Allow rapid determination of phase sequence
- + Voltage Range 40-700 V
- + Frequency Range 15-400 Hz
- + Operating Timer Continuous
- + Qty = 1 EA



FLUKE-789 PROCESS METER

- + 24 V Loop power supply
- + Enhanced backlight with 2 brightness settings
- + 1200 ohm drive capability on mA source
- + HART mode setting with loop power and a built-in 250 ohm resistor
- + 0% and 100% buttons to toggle between 4 and 20 mA sourcing for a quick span check
- + Externally accessible fuses for easy replacement
- + Qty = 5 EA



FLUKE-1587/1577 INSULATION MULTIMETER

- + Insulation test voltages 500V, 1000V
- + Insulation test: 0.1 MΩ to 600 MΩ
- + Auto discharge of capacitive voltage
- + AC/DC Voltage
- + DC millivolts
- + AC/DC milliamps
- + Resistance (0.1 Ω to 50 MΩ)
- + Qty = 3 EA

PT. LNS INDONESIA

Margomulyo Jaya B-22, Jl Sentong Asri, Margomulyo- Surabaya 60186

Phone: +62 31 7484280 | Fax: +62 31 7484281

info@lns.co.id

www.lnsindonesia.com

TABLE OF CONTENTS MECHANICAL TOOLS

WUXI HENGTONG TURNING ROLLER - HGZ50	06
WUXI HENGTONG TURNING ROLLER - HGZ100	06
SUPPORTING TURNING ROLLER - BY LNS INDONESIA	06
SEI DAI PRECISION INDUSTRIES CO. - V.S MOTOR/COUPLING	07
ENERPAC ZU4208TI-QH - ELECTRIC TORQUE WRENCH PUMPS	07
ENERPAC - THQ-706T, TORQUE WRENCH HOSES	07
ENERPAC S25000 - SQUARE DRIVE HYDRAULIC TORQUE WRENCHES	07
GOUGING & WELDING MACHINE	08
CAMMANATOR METAL DISINTEGRATION MODEL C-45 SQSS RCSC	08
BA-270 - AUTOMATIC CUTTING MACHINE	09
KOIKE IK-72T - AUTOMATIC CUTTING MACHINE	09
SKF TIH 030M / 110V SMALL BEARING INDUCTION HEATER	09
SKF - TMFT36 - INSTALL BEARING REPAIR KIT	09
MIRAGE - NM1000i (6 - 40") FLANGE FACING MACHINE	10
ZAY7045G - MILLING & DRILLING MACHINE	10
WU 2000 TD 25 & T25 ULTRASONIC CLEANER SONOPOWER	10
KRISBOW - SAND BLASTING MACHINE STAND 89X56X138CM	10
LIST OF MAGNETIC DRILL	11
LIST OF HYDRAULIC JACK	11
LIST OF COMPRESSOR	12
LIST OF CHAIN BLOCK	12
C6240A - HEAVY DUTY PRECISION LATHE MACHINE	13
TELHOO - DW115NC SEMI AUTOMATIC BENDING MACHINE	13
TORQUE WRENCH	13
IMPACT WRENCH RING	13

PT. LNS INDONESIA

 Margomulyo Jaya B-22, Jl Sentong Asri, Margomulyo- Surabaya 60186
 Phone: +62 31 7484280 | Fax: +62 31 7484281
 info@lns.co.id
 www.lnsindonesia.com

TABLE OF CONTENTS MECHANICAL TOOLS

SOKKIA B20 AUTOMATIC LEVEL	14
NIKON AC-2S AUTOMATIC LEVEL	14
HDV-5CAM-10F BORESCOPE CABLE	14
HDV640W BORESCOPE EXTECH	14
LEICA-D8 DISTANCE METER	15
OLYMPUS - 45MG THICKNESS GAGE	15
ALISENSOR - 3187 & 3186 - SHAFT ALIGMENT SYSTEM	15
MITUTOYO SJ-210 - SURFACE ROUGHNESS MEASURING TESTER	15
DIGITAL LEVEL SMART TOOLS	16
KRISBOW KW06-527 DIGITAL LEVEL	16
BLOWER & DUCTING	16
DIGIPAS - DWL-2000XY - 2-AXIS PRECISION DIGITAL MACHINIST LEVEL	16
DIGITAL CALIPER MITUTOYO - SIZE 500-173	17
DIGITAL CALIPER KRISBOW - DC-200	17
DEEP GAGE CALIPER INSIZE (0-300 MM)	17
VERNIER CALIPER MITUTOYO (0-300MM)	17
BORE GAGE DELTA (50-150MM)	17
BORE GAGE KRISBOW (18-35 MM)	17
BORE GAGE MITUTOYO 511-703 (50-150MM)	17
MICROMETER OUTSIDE MITUTOYO (0-25MM)	18
MICROMETER OUTSIDE MITUTOYO (0-150MM)	18
MICROMETER INSIDE MITUTOYO (50-500 MM)	18
MAGNETIC STAND MITUTOYO 7011S - 10	18
DIGITAL PRESSURE GAUGE	18
OVEN (120 x 126 x 123 cm)	18

PT. LNS INDONESIA

📍 Margomulyo Jaya B-22, Jl Sentong Asri, Margomulyo- Surabaya 60186

☎ Phone: +62 31 7484280 | Fax: +62 31 7484281

✉ info@lns.co.id

🌐 www.lnsindonesia.com

Mechanical Tools



WUXI HENGTONG TURNING ROLLER - HGZ50

- + Type : HGZ-50 / Self-aligned
- + Main Consistent : One power unit, one idler unit and one hand control pendant
- + Power supply : 380V 3 Phases 50Hz
- + Speed control : Variable Frequency Drive (VFD)
- + Applicable diameter of working piece (mm) : Φ 700-4500
- + Loading capacity (T) : 50
- + Roller diameter (mm) : Φ 400 x 120
- + Liner speed (mm/min) : 100-1000
- + Motor power (kw) : 4
- + Roller Material : Rubber
- + Control Method : Hand control panel
- + Qty = 1 Unit



WUXI HENGTONG TURNING ROLLER - HGZ100

- + Type : HGZ-100 / Self-aligned
- + Main Consistent : One power unit, one idler unit and one hand control pendant
- + Power supply : 380V 3 Phases 50Hz
- + Speed control : Variable Frequency Drive (VFD)
- + Applicable diameter of working piece (mm) : Φ 1000-5500
- + Loading capacity (T) : 100
- + Roller diameter (mm) : Φ 500 x 120
- + Liner speed (mm/min) : 100-1000
- + Motor power (kw) : 7.5
- + Roller Material : Rubber
- + Control Method : Hand control panel
- + Qty = 1 Unit



SUPPORTING TURNING ROLLER - BY LNS INDONESIA

- + Applicable diameter of working piece (mm) : 700 - 5500
- + Loading capacity (T) : 100
- + Roller Diameter (mm) : 300 x 300
- + Roller Material : Carbon Steel Pipe
- + Qty = 8 Unit

PT. LNS INDONESIA

Margomulyo Jaya B-22, Jl Sentong Asri, Margomulyo- Surabaya 60186

Phone: +62 31 7484280 | Fax: +62 31 7484281

info@lns.co.id

www.lnsindonesia.com

Mechanical Tools



SEI DAI PRECISION INDUSTRIES CO. - V.S MOTOR/COUPLING

- + Motor : 3 phase / 4 pole / AC / 380 V / 75 kW
- + Speed : 130 - 1300 RPM
- + Torque : 40 kg-M
- + Insulation : B CLASS
- + Ambient Temp. : 60 C
- + Exc. Voltage : DC 0 - 80 V
- + Exc. Current : DC 0 - 4.2 A
- + Qty = 1 Set



ENERPAC ZU4208TI-QH - ELECTRIC TORQUE WRENCH PUMPS

- + Max Pressure : 10,000 psi
- + Motor Electrical Specification : 208-240 VAC, 1-ph
- + Usable Oil Capacity : 1,75 gal
- + Weight with Oil : 76 lbs
- + Qty = 1 Set



ENERPAC - THQ-706T, TORQUE WRENCH HOSES

- + For use with torque wrenches: 10,000 psi S, W-series
- + Twin Safety Hoses : 19.5 feet / 6 meter, long
- + Coupler Thread : NPTF, 1/4"
- + Max. Flow Capacity : 695 in³/min / 11.4 l/min
- + THQ-700-series with spin-on couplers for:
700 bar S and W-series torque wrenches
Torque wrench pumps with suffix "Q"
- + Thermoplastic torque wrench hoses
- + Qty = 2 EA



ENERPAC S25000 - SQUARE DRIVE HYDRAULIC TORQUE WRENCHES

- + Typical Socket Size Range : 60 - 2552 mm | 3/8 - 10 inch
- + Square Drive : 2 1/8 inch
- + Maximum Torque at 690 bar : 34,099 Nm | 25,150 Ft.lbs
- + Weight : 31,0 kg
- + Optional Allen-Key Range : 36 - 85 mm | 1 1/2 - 2 1/4 inch
- + Push-button release for direction reversal
- + Constant torque output for +/-3% accuracy
- + 360-degree manifold design with screw-lock couplers for maneuverability
- + Durable steel construction with nickel plating
- + Qty = 1 Set

PT. LNS INDONESIA

Margomulyo Jaya B-22, Jl Sentong Asri, Margomulyo- Surabaya 60186

Phone: +62 31 7484280 | Fax: +62 31 7484281

info@lns.co.id

www.lnsindonesia.com

Mechanical Tools



No	Equipment	Merk	Type	Specification	Qty
1	Gouging Machine	Woo Sung	-	1000 A	1 Unit
2	Gouging Machine	Esab	LCF 1200 Single Voltage	1200 A	2 Unit
3	SAW Welding Machine	Woo Sung	DC 1500 A, 380 V	1500 A	2 Unit
4	FCAW Welding Machine	OTC	XD 500 S	500 A	5 Unit
5	FCAW Welding Machine	Weico	WM 500 F	500 A	1 Unit
6	FCAW Welding Machine	Esab	SCR 500 S	500 A	1 Unit
7	SMAW Welding Machine	Antech	ZX5-400 MMA DC	400 A	3 Unit
8	SMAW Welding Machine	Weico	DC 400 A	400 A	1 Unit
9	SMAW Welding Machine	Esab	Buddy Arc 200	200 A	2 Unit
10	GTAW Welding Machine	Time	Inverter WS-315	315 A	1 Unit
11	GTAW Welding Machine	Esab	TIG 3000 I	200 A	1 Unit
12	GTAW Welding Machine	Time	Inverter ZX7 -400	400 A	1 Unit
13	GTAW Welding Machine	Lakoni	FALCON 141 GE	120 A	1 Unit
14	Plasma Cutting Machine	OTC	Air Plasma A 70	70 A	1 Unit



Cammanator Metal Disintegration Model C-45 SQSS RC SC

CAMMANATOR METAL DISINTEGRATION MODEL C-45 SQSS RC SC

- + Weight : 930 LBS/422kgs
- + Dimensions : 38"/965mm x 58"/1473mm x 48"/1219mm high
- + Standard Incoming Service Voltage : 230,380,415, or 460 Volt, Single Phase connection
- + Incoming Compressed Air : Supply with minimum of 70 psi/5 bar 4 cfm/.11 cubic meters/min. Air supply. Maximum air supply 150 psi/10 bar.
- + Coolant Tank Capacity : 20 gallons/76 liters
- + Internal Cooling Pump and Motor : 1/3 HP 50/60 HZ 120 Volt
- + Bolt Size Available :
 - Minor Diameter Method : 4 - 40 to 1 1/4 - 12
 - Square Method : 1/4 - 20 to 2 - 8
 - Coring and Slitting Method : 1 3/8 - 6 to 5 1/2 - 8

PT. LNS INDONESIA

📍 Margomulyo Jaya B-22, Jl Sentong Asri, Margomulyo- Surabaya 60186

☎ Phone: +62 31 7484280 | Fax: +62 31 7484281

✉ info@lns.co.id

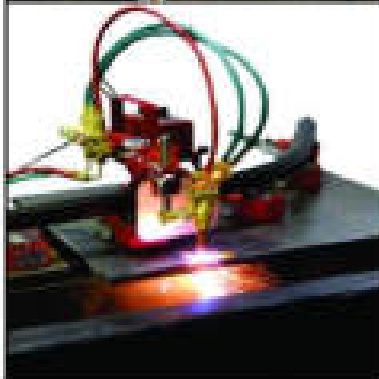
🌐 www.lnsindonesia.com

Mechanical Tools



BA-270 - AUTOMATIC CUTTING MACHINE

- + Cutting Thickness : 5 - 50 mm
- + Cutting Speed : 100 - 700 mm/min
- + Circle Cutting Range : 80 - 1200 mm
- + Bevel Angle : 0 - 45°
- + Diameter of minimum cutting area : 2000 mm
- + Input Voltage : 100 V / 220 Hz
- + Length / Weight : 1-D | 1,5 m / 8.2 Kg
3-D | 1 m / 8 Kg
- + Permanent magnet track and clutch lever releases side rollers
- + Qty = 2 Set



KOIKE IK-72T - AUTOMATIC CUTTING MACHINE

- + Cutting thickness : 5-50 mm
- + Cutting speed : 150-700 mm
- + Type of drive : PWM/rack and pinion method
- + Power supply : 42 V / 115 V AC
- + Type of gas : Acetylene, propane, natural gas and mapp gas
- + Bevel Angle & Tip : 0 - 45° & 102 or 106 V
- + Minimum Curve Line Length : 2000 mm (80°) radius
- + Cuts various types of steel including channel, curved plate and angled steel member
- + Qty = 1 Set (with 3 Set of Auto Cutting Rail IK-72T)



SKF TIH 030M / 110V SMALL BEARING INDUCTION HEATER

- + Voltage : 100-120V AC
- + Frequency : 50 or 60Hz
- + Power : 2.0kVA
- + Heater mass : 20.9kg (46lbs)
- + Dimensions : 450 × 195 × 210 mm (17,7 × 7,6 × 8,2 in)
- + Temp. mode : 0 – 250 °C (32 – 482 °F)
- + 2-step power setting and smaller yokes allow heating smaller bearings safely and at lower power consumption
- + Qty = 1 Unit



SKF - TMFT36 - INSTALL BEARING REPAIR KIT

- + 36 impact rings in different sizes facilitate the mounting of more than 400 different bearings
- + Facilitates correct mounting on shaft, housing and blind applications
- + The diameter of the impact ring perfectly fits the inner and outer diameter of the bearing
- + Small diameter of the impact area on top of the sleeve allows effective transmission and distribution of mounting force
- + Impact rings and sleeves are made of high-impact resistant material for longevity
- + The impact rings are suitable for use under a press
- + Qty = 1 Set

PT. LNS INDONESIA

Margomulyo Jaya B-22, Jl Sentong Asri, Margomulyo- Surabaya 60186

Phone: +62 31 7484280 | Fax: +62 31 7484281

info@lns.co.id

www.lnsindonesia.com

Mechanical Tools



MIRAGE - MM1000i (6 - 40") FLANGE FACING MACHINE

- + Three speed continuous feed gearbox, for gramophone finish
- + Minimum Facing Diameter : 153mm | 6"
- + Maximum Facing Diameter : 1000mm | 40"
- + Minimum Clamping Diameter : 145mm | 5.7"
- + Maximum Clamping Diameter : 813mm | 32"
- + Minimum Swing Diameter : 813mm | 32"
- + Tool Post Travel – (geared automatic) : 102mm | 4"
- + R.P.M : Min: 0 | Max: 33
- + Drive – Pneumatic @ 90 P.S.I (6 bar) : 1.7Kw | 2.2Hp
- + Air Consumption / Supply Required : 1.79 m³/min | 64 S.C.F.M
- + Qty = 1 Set



ZAY7045G - MILLING & DRILLING MACHINE

- + Maximum Drilling Capacity : 45 mm
- + Maximum Face Mill Capacity : 80 mm
- + Maximum End Mill Capacity : 28 mm
- + Maximum Tapping Capacity : M12
- + Maximum Spindle Capacity : 130 mm
- + Working Area of Table : 700mm x 240mm or 800mm x 240mm
- + Forward and Backward Travel of table : 175 mm
- + Left and Right Travel of table : 400 mm or 500 mm
- + Motor : 1.5 kW
- + Qty = 1 Unit



KRISBOW - SAND BLASTING MACHINE STAND 89X56X138CM

- + Model KW1200170 with safety glove
- + Applicable for cleaning, derusting, descaling, polishing, abrasive
- + Specifications - Air Hose (cm) : 70
- Sand Hose (cm) : 65
- Nozzle size (mm) : 5
- + Material : Stainless steel
- + Qty = 1 Unit



WU 2000 TD 25 & T25 ULTRASONIC CLEANER SONOPOWER

- + Frequency : 25 kHz
- + Operating Voltage : 230V +/- 15%
- + Power Consumption : 9.6 A
- + Effective Power Output : 2000 W / 2200 VA
- + Maximum Output : 4000 W
- + Fuse Protection : 10 A
- + Temperature range generator module : -10 to +40 C
- + Power Housing GT 28 : 230 V Schuko
- + Dimension Housing GT 28 : 194 x 184 x 397 mm (WxHxD)
- + Qty = 2 Unit

PT. LNS INDONESIA

Margomulyo Jaya B-22, Jl Sentong Asri, Margomulyo- Surabaya 60186

Phone: +62 31 7484280 | Fax: +62 31 7484281

info@lns.co.id

www.lnsindonesia.com

Mechanical Tools



No	Equipment	Merk	Type	Specification	Qty
1	Magnetic Drill	Millwaukee	4297-1	1-1/4", 4203 stand, 250-500 Rpm, 120V, 60 HZ	3 Unit
2	Magnetic Drill	Millwaukee	4292-1	1-1/4", 4203 stand, 375-750 Rpm, 120V, 60 HZ	4 Unit
3	Magnetic Drill	MTM	930 A	include MSP 1200S, Drilling 6-32 mm	2 Unit
4	Magnetic Drill	Rotabroach	Scorpion	6 - 32 mm	1 Unit
5	Magnetic Drill	Melzer	J1C 23NS	2 - 13 mm	1 Unit
6	Magnetic Drill	Melzer	J1C 32B	Max D:32 mm, Un-Load Speed 190 RPM	1 Unit



Hydraulic Jack

No	Equipment	Merk	Pump	Specification	Qty
1	Hydraulic Jack	Tecpos	TMP-2HP-2S-P	TDC 400 Ton 300 ST	4 Set
2	Hydraulic Jack	Tecpos	TMP-1HP-2S-P	TDC 300 Ton 300 ST	2 Set
3	Hydraulic Jack	Tecpos	TMP-2HP-2S-P	TDC 200 Ton 500 ST	3 Set
4	Hydraulic Jack	Tecpos	TMP-2HP-2S-P	TDC 200 Ton 300 ST	4 Set
5	Hydraulic Jack	Tecpos	TMP-2HP-2S-P	TDC 100 Ton 300 ST	1 Set
6	Hydraulic Jack	Enerpac	P462	Rc10010, 100 Ton Single Acting 10" ST	2 Set
7	Hydraulic Jack	Enerpac	P80	Rc504, 50 Ton Single Acting 4" ST	2 Set
8	Hydraulic Jack	Enerpac	P80	Rc506, 50 Ton Single Acting 6" ST	1 Set
9	Hydraulic Jack	Huanhu	HHB 700A	50 Ton 150 ST	2 Set
10	Hydraulic Jack	Huanhu	HHB 700	50 Ton 50 ST	4 Set
11	Hydraulic Jack	Enerpac	P39	RCS302, 30 Ton Single Acting 2" ST	4 Set
12	Hydraulic Jack	Enerpac	-	10 Ton, 150 mm	1 Set
13	Hydraulic Jack	Enerpac	-	5 Ton, 150 mm	1 Set

PT. LNS INDONESIA

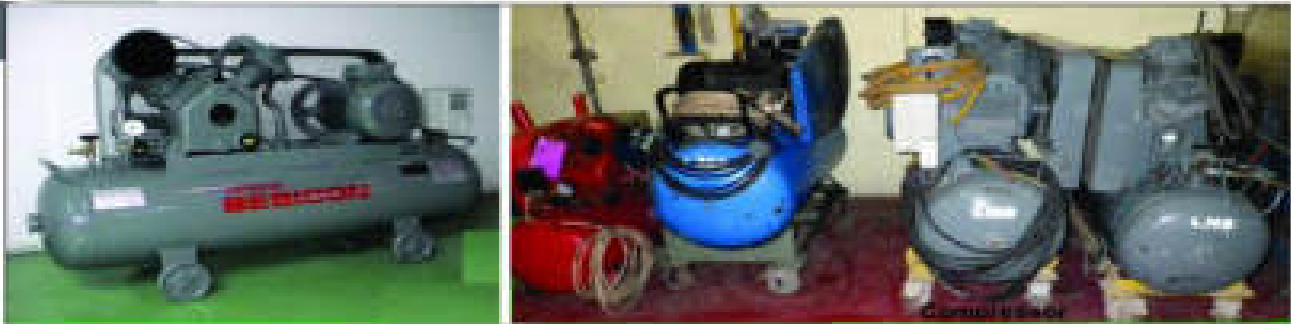
Margomulyo Jaya B-22, Jl Sentong Asri, Margomulyo- Surabaya 60186

Phone: +62 31 7484280 | Fax: +62 31 7484281

info@lns.co.id

www.lnsindonesia.com

Mechanical Tools



No	Equipment	Merk	Type	Specification	Qty
1	Compressor	ABAC	Y13251-Z	Power 7,5 HP, Vol 270 liter, 11 Bar	1 Unit
2	Compressor	Hitachi	11P-9.5 V5A	Max Pres. 0,93 Mpa (9.5 kgf/cm ²)	2 Unit
3	Compressor	NLG	BAC 1020	Press. 10 bar, Power 2.0 HP, Cap. 160 l/m	1 Unit



No	Equipment	Merk	Specification	Qty
1	Chain Block	Kondo	10 ton, 5 m	2 EA
2	Chain Block	Shuang Ge	10 ton, 5 m	1 EA
3	Chain Block	Elephant	5 ton, 3 m	2 EA
4	Chain Block	Elephant	5 ton, 5 m	2 EA
5	Chain Block	Kondo	5 ton, 5 m	4 EA
6	Chain Block	Elephant	3 ton, 7 m	1 EA
7	Chain Block	Kondo	3 ton, 5 m	5 EA
8	Chain Block	Elephant	2 ton, 7 m	1 EA
9	Chain Block	Kondo	2 ton, 5 m	5 EA
10	Chain Block	Elephant	1.5 ton, 5 m	4 EA

PT. LNS INDONESIA

📍 Margomulyo Jaya B-22, Jl Sentong Asri, Margomulyo- Surabaya 60186

☎ Phone: +62 31 7484280 | Fax: +62 31 7484281

✉ info@lns.co.id

🌐 www.lnsindonesia.com

Mechanical Tools



C6240A - HEAVY DUTY PRECISION LATHE MACHINE

- + Center height : 202mm (8")
- + Max. swing over bed : Φ 400mm (16")
- + Max. swing over carriage : Φ 245mm (10")
- + Max. swing over gap : Φ 585mm (23")
- + Effective gap length : 200mm (8")
- + Power : 4.5 kW
- + Voltage : 380 V
- + Max. length of workpiece : 750/1000mm (30/39")
- + Bed width : 330mm (13")
- + Qty = 1 Unit



TELHOO - DW115NC SEMI AUTOMATIC BENDING MACHINE

Min Bending CLR

- + Carbon Pipe : 1.5D (Φ 115 x 6.0t)
- + Stainless Steel Pipe : 1.5D (Φ 88.9 x 2.0t)
- + For CLR <1.5D : Squeezed Size*
- + Max Length of Bending Pipe : 3600 mm
- + Max R for Bending : 500 mm
- + Max Angle for Bending : 185°
- + Qty = 1 Unit



TORQUE WRENCH

No	Merk	Type	Size	Qty
1	Britool	EVT 1200A	25-135 Nm	1 EA
2	Britool	EVT 7200	200-810 Nm	3 EA
3	Britool	EVT 5000	140-580 Nm	1 EA
4	Britool	EVT 3000A	70-330 Nm	3 EA



IMPACT WRENCH RING

No	Merk	Size	Qty
1	Matador	100 mm	1 EA
2	Elora	95 mm	1 EA
3	Heyco	90 mm	1 EA
4	Heyco	85 mm	1 EA
5	Fatools, W-Germany	75 mm	4 EA
6	Fatools, W-Germany	70 mm	3 EA
7	Fatools, Wiesemann	65 mm	3 EA
8	Fatools, Wiesemann	60 mm	3 EA
9	Fatools, Lippro	55 mm	5 EA
10	Fatools, Lippro	50 mm	4 EA
11	Fatools, W-Germany	46 mm	4 EA
12	Fatools, W-Germany	41 mm	4 EA
13	Fatools, W-Germany	36 mm	4 EA

PT. LNS INDONESIA

Margomulyo Jaya B-22, Jl Sentong Asri, Margomulyo- Surabaya 60186

Phone: +62 31 7484280 | Fax: +62 31 7484281

info@lns.co.id

www.lnsindonesia.com

Mechanical Tools



SOKKIA B20 AUTOMATIC LEVEL

- + Length : 215mm
- + Magnification : 32x
- + Objective Aperture : 42mm
- + Resolving Power : 3"
- + Field of View : 1°20' (2.3m/7.5ft)
- + Minimum Focus : 0.2m from end of telescope,
0.3m from instrument center
- + Horizontal motion drive : Clamless, endless, double-sided knobs
- + Water Resistance : IPX6
- + Qty = 1 Set



NIKKON AC-2S AUTOMATIC LEVEL

- + Telescope - Tube length : 7.5" (190 mm)
- + Effective diameter of objective lens : 1.2" (30 mm)
- + Magnification : 24x
- + Field of view : 1°30' (2.6' at 100')
- + Resolution power : 3.5"
- + Minimum focusing distance : 2.46' (.75 m)
- + Automatic compensator - Type : Wire-hung, air damper
- + Setting accuracy : ±0.5"
- + Level vial sensitivity - Circular level : 10/2 mm
- + Qty = 1 Set



HDV-5CAM-10F BORESCOPE CABLE

- + Resolution : 640 x 480 pixels
- + Length : 10m (32.1')
- + Outer diameter (O.D.) : 5.5mm (0.22")
- + Focus distance : 6cm to ∞ (2.36" to ∞)
- + Housing : Stainless Steel
- + Field of View : 65°
- + Number of LEDs : 4
- + Lamp Output : 3500 Lux at 20mm
- + Qty = 1 EA



HDV640W BORESCOPE EXTECH

Camera

- + Minimum Focus distance : 2.36" (60mm); macro: 0.59" (15mm)
- + Field of View : 65°
- + Shaft diameter : 0.24" (6mm)
- + Working length : 39" (1m)
- + Camera Tip bending : 240° (120° left, 120° right)

Borescope

- + LCD Color TFT Display : 5.7" (14.5cm) size;
5.3" (13.5cm) viewable
- + Pixels : 640 x 480 VGA pixel resolution
(320 x 240 for 4mm camera)
- + Frame Rate : 30 fps frame rate (NTSC & PAL)
- + Operating : up to 4 hours AVI video
- + Qty = 2 Set

PT. LNS INDONESIA

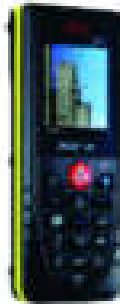
Margomulyo Jaya B-22, Jl Sentong Asri, Margomulyo- Surabaya 60186

Phone: +62 31 7484280 | Fax: +62 31 7484281

info@lns.co.id

www.lnsindonesia.com

Mechanical Tools



LEICA-D8 DISTANCE METER

- + Measurement range : 0.05 m to 200 m
- + Accuracy : ± 1.0 mm
- + Resolution : 1 mm
- + Laser : class 2
- + Power Range Technology : long distance measurements without blank test
- + Distance in m : 10, 50, 100 m
- + \varnothing of laser spot in mm : 6, 30, 60 mm
- + Interface : Bluetooth (class 2)
- + Max/Min and Continuous measurements : yes
- + Qty = 1 EA



OLYMPUS - 45MG THICKNESS GAGE

- + Thickness range : 0.080 mm to 635 mm
- + Material velocity range : 0.508 mm/ μ s to 18.699 mm/ μ s
- + Resolution (selectable) : Low: 0.1 mm (0.01 in.)
Standard: 0.01 mm (0.001 in.)
Single Element option: 0.001 mm (0.0001 in.)
- + Transducer frequency range : Standard: 2.25 MHz to 30 MHz (-3 dB)
High Penetration: 0.50 MHz to 30 MHz (-3 dB)
- + Qty = 1 Set



ALISENSOR - 3187 & 3186 - SHAFT ALIGNMENT SYSTEM

- + Measurement range : Up to 3 m [10 feet]
- + Shaft diameter w. chains : $\varnothing 20$ - $\varnothing 450$ mm [$\varnothing 0.8$ "- $\varnothing 17$ "]
- + Weight (including iPad) : 3.3 kg [7.3 lbs]
- + Detector length : 20 mm [0.8"]
- + Measuring errors : Less than $\pm 1\%$ + one digit
- + Resolution : 0.001 mm [0.05 mils]
- + Inclinometer resolution : 0.1°
- + Line laser & class : Red 650 nm & Safety class 2
- + Wireless communication : Bluetooth LE
- + Qty = 1 Set



MITUTOYO SJ-210 - SURFACE ROUGHNESS MEASURING TESTER

- + Measuring range : 17.5mm
- + Measuring speed : 0.25, 0.5, 0.75mm/s 1mm/s (Returning)
- + Drive unit : Standard type
- + Detector range : 360 μ m (-200 μ m to +160 μ m)
- + Measuring Force : 4mN
- + Stylus tip radius : 5 μ m
- + External I/O : USB I/F, Digital output, Printer output,
RS-232C I/F, Foot SW I/F
- + Power Supply : Two way power supply (battery and AC adapter)
- + Data storage : Memory card
- + Detector Conical taper angle : 90°
- + Qty = 1 Set

PT. LNS INDONESIA

Margomulyo Jaya B-22, Jl Sentong Asri, Margomulyo- Surabaya 60186

Phone: +62 31 7484280 | Fax: +62 31 7484281

info@lns.co.id

www.lnsindonesia.com

Mechanical Tools



DIGITAL LEVEL SMART TOOLS

- + Number of Axis : 1
- + Range : 360°
- + Resolution : 0.05 @ 0° & 90°, 0.1 all other angles°
- + Accuracy at 20°C : ±0.05 Level, ±0.05 Plumb, ±0.2 other°
- + Power Source : PP3 (9V) Battery
- + Frequency Response : 1Hz
- + Technology : Liquid filled capacitive
- + Applications : Measuring or setting the pitch of drainage pipes
Setting or checking access ramps

+ Qty = 1 EA



KRISBOW KW06-527 DIGITAL LEVEL

- + Measuring Range : 0°-360°
- + Accuracy : +0.1° (0°/ 90°) & +0.2° (@ other angles)
- + Laser precisions : +7mm @30m
- + Power Supply : 2x1.5 V AAA
- + Laser Class : III a, 635-665nm, <1 mW
- + Batteries Lifetime : up to 8 hours
- + Working Temperature Ranges: 0°C-40°C
- + Dimension (mm) : 300 x 30 x 80
- + Weight (kg) : 2.63

+ Qty = 1 EA

BLOWER & DUCTING

- + Vanco - size 16" (2EA)
- + Spectek - size 16" (4EA)



DIGIPAS - DWL-2000XY - 2-AXIS PRECISION DIGITAL MACHINIST LEVEL

- + Measuring range : from 0° ~ ±90° single-axis; 0° ~ ±3° dual-axis
- + Resolution of 0.01° : (0.175 mm/M) (0.002 in/Ft.)
- + Accuracy : ± 0.02° at 0° to 2.00°; ± 0.04° at other angles
- + Operating temperature : -10°C to +50°C
- + Digital colour graphic display of dual angles
- + Enable USB external power source
- + Professional PC Sync software with USB connection to device for remote monitoring & data logging (Optional)
- + Product accuracy is verified by accredited 3rd party calibration and test service providers in USA, Japan, UK & Germany to conform with NIST, JIS, UKAS & DIN under ILAC & A2LA
- + Qty = 1 EA

PT. LNS INDONESIA

📍 Margomulyo Jaya B-22, Jl Sentong Asri, Margomulyo- Surabaya 60186

☎ Phone: +62 31 7484280 | Fax: +62 31 7484281

✉ info@lns.co.id

🌐 www.lnsindonesia.com

Mechanical Tools



DIGITAL CALIPER

- + Mitutoyo - Size 500-173; CD-12" - 3 EA
- + Krisbow - DC-200; 0-200 mm - 1 EA



DEEP GAGE CALIPER INSIZE (0-300 MM) - 1 EA



VERNIER CALIPER MITUTOYO (0-300MM) - 12 EA



BORE GAGE DELTA (50-150MM) - 1 EA



BORE GAGE KRISBOW (18-35 MM) - 1 EA



BORE GAGE MITUTOYO 511-703 (50-150MM) - 1 EA

PT. LNS INDONESIA

📍 Margomulyo Jaya B-22, Jl Sentong Asri, Margomulyo- Surabaya 60186

☎ Phone: +62 31 7484280 | Fax: +62 31 7484281

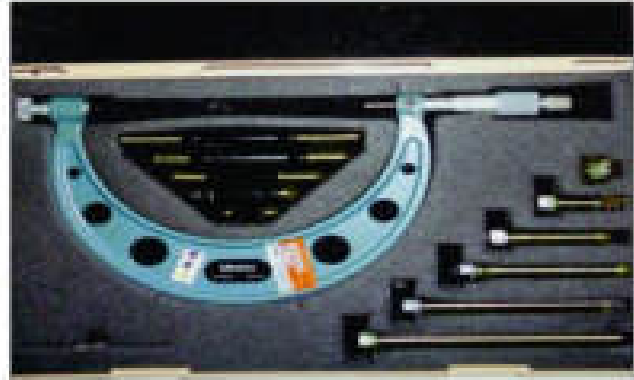
✉ info@lns.co.id

🌐 www.lnsindonesia.com

Mechanical Tools



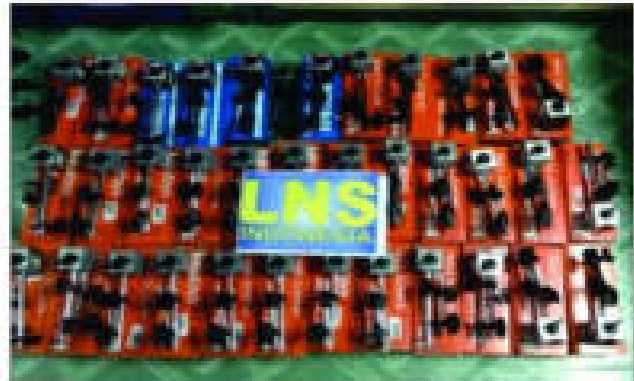
MICROMETER OUTSIDE MITUTOYO (0-25MM)
- 16 EA



MICROMETER OUTSIDE MITUTOYO (0-150MM)
- 1 EA



MICROMETER INSIDE MITUTOYO (50-500 MM)
- 1 EA



MAGNETIC STAND MITUTOYO 7011S - 10
- 34 EA



DIGITAL PRESSURE GAUGE
+ WIKA 14020062 - Size 40 bar - 4 EA
+ WIKA 14081248 - Size 40 bar - 4 EA
+ WIKA 14060526 - Size 40 bar - 2 EA
+ WIKA 14060523 - Size 40 bar - 2 EA



OVEN (120 x 126 x 123 cm.) - 1 EA

PT. LNS INDONESIA

📍 Margomulyo Jaya B-22, Jl Sentong Asri, Margomulyo- Surabaya 60186

☎ Phone: +62 31 7484280 | Fax: +62 31-7484281

✉ info@lns.co.id

🌐 www.lnsindonesia.com

TABLE OF CONTENTS INSTRUMENT TOOLS

KRISBOW KW06-278 SINGLE INPUT DIGITAL THERMOMETER	19
FLUKE 51 & 52 SERIES II THERMOMETER	19
LUTRON DIGITAL VB-8202 - VIBRATION METER	19
BRUEL & KJAER - V160 - VIBROTEST	19
FLUKE 810 VIBRATION TESTER	20
FLUKE - 724 TEMPERATURE CALIBRATOR	20
LUTRON SL-4012 - SOUND LEVEL METER	20
FLUKE - 3130 PORTABLE PRESSURE CALIBRATOR	20
LUTRON LIGHT METER LX-1108	21
KESTREL-4000 - POCKET WEATHER	21
KW06-304 - INFRARED THERMOMETER	21
KESTREL-4000 - POCKET WEATHER	21

TABLE OF CONTENTS TELECOM TOOLS

EMERSON-475 - FIELD COMMUNICATOR	22
BIRD 75-T-MN TERMALINE RF LOAD DC- 4GHz N(M)	22
BIRD 8201 TERMALINE DUMMY LOAD - 500W	22
ZM-104A IMPEDANCE METER	22

PT. LNS INDONESIA

 Margomulyo Jaya B-22, Jl Sentong Asri, Margomulyo- Surabaya 60186

 Phone: +62 31 7484280 | Fax: +62 31 7484281

 info@lns.co.id

 www.lnsindonesia.com

Instrument Tools



KRISBOW KW06-278 SINGLE INPUT DIGITAL THERMOMETER

- + Type KW06-278 Single Input
- + Function Temperature
- + Range 50.0pC-1300pC
- + Accuracy $\pm 0.5\% \pm 1pC$
- + Range 50.0pC-1300pC
- + Qty = 1 EA



FLUKE 51 & 52 SERIES II THERMOMETER

- + Temperature accuracy (Measures J, K, T, and E-types)
 - Above -100 °C J, K, T, E, and N-type: $\pm[0.05\% + 0.3^{\circ}C]^*$
 - R and S-type: $\pm[0.05\% + 0.4^{\circ}C]^*$
 - Below -100 °C J, K, E, and N-types: $\pm[0.20\% + 0.3^{\circ}C]^*$
 - T-type: $\pm[0.50\% + 0.3^{\circ}C]$
- + Temperature
 - J-type (-210 °C to 1200 °C) E-type (-150 °C to 1000 °C)
 - K-type (-200 °C to 1372 °C) K-type (-200 °C to 1300 °C)
 - T-type (-250 °C to 400 °C) R & S-type (0 °C to 1767 °C)
- + Operating Temperature -10 °C to 50 °C
- + Qty = 2 EA



LUTRON DIGITAL VB-8202 - VIBRATION METER

- + Measuring range
 - speed (VEL) : 0.5 - 199.9 mm/s
 - acceleration (ACC) : 0.5 - 199.9 m/s²
- + Frequency range 10Hz-1KHz
- + Accuracy + 5%
- + Sampling time Approx. 0.5 second
- + Data output RS 232 serial output, isolate
- + Operating temperature 0°C to 50°C (32°F to 122°F)
- + Reading the value of locking and record the max. / min. value measurement
- + Suitable for the vibration measurement of metal and non-metallic objects
- + Qty = 2 Set



BRUEL & KJAER - Vi60 - VIBROTEST

- + FFT-analyser, data collector and field balancer in one instrument
- + Low weight, large storage capacity, flexible handling
- + IP 41 conformity
- + Genuine 2-channel instrument with speed measurement
- + High-tech digital signal processor (DSP)
- + High measurement accuracy
- + Excellent 12,800 line FFT spectrum resolution
- + Brilliant, high-contrast graphic LCD display with backlight
- + Simplify and shorten a balancing procedure
- + Qty = 1 Set

PT. LNS INDONESIA

Margomulyo Jaya B-22, Jl Sentong Asri, Margomulyo- Surabaya 60186

Phone: +62 31 7484280 | Fax: +62 31 7484281

info@lns.co.id

www.lnsindonesia.com

Instrument Tools



FLUKE 810 VIBRATION TESTER

- + On-board identification and location of the most common mechanical faults (bearings, misalignment, unbalance, looseness, etc) focus maintenance efforts on root cause, reducing unplanned downtime
- + Fault severity scale with four severity levels (prioritize maintenance work)
- + Repair recommendations advise technicians on corrective action
- + 2 GB expandable on-board memory
- + Laser tachometer for accurate machine running speed
- + Tri-axial accelerometer reduces measurement time by 2/3 over single axis accelerometers
- + Qty = 1 Set



FLUKE - 724 TEMPERATURE CALIBRATOR

- + Operating temperature -10 °C to 55 °C
- + Storage temperature -20 °C to 71 °C
- + Operating altitude 3000 meters above mean sea level
- + Relative Humidity (% RH operating without condensation) :

90 % (10 to 30 °C)	45 % (40 to 50 °C)	uncontrolled < 10 °C
75 % (30 to 40 °C)	35 % (50 to 55 °C)	
- + Vibration Random, 2 g, 5 to 500 Hz
- + Qty = 2 Set



LUTRON SL-4012 - SOUND LEVEL METER

- + Function : Range : 30 – 130 dB
: Resolution : 0.1 dB
- + Feature : Manual / Automatic range
Frequency & time weighting
A & C frequency weighting
Fast / Slow time weighting
Peak hold (Max / Min)
AC output & Rs232 interface
- + Qty = 5 EA



FLUKE - 3130 PORTABLE PRESSURE CALIBRATOR

- + Operating Temperature -10 °C to +50 °C (14 °F to 122 °F)
- + Storage -20 °C to +55 °C (-4 °F to +131 °F)
- + Altitude 2000 meters, limited by ac adapter
- + Humidity 10 % to 95 % RH Non-condensing
- + mA 0 to 24.000 mA (0.015 % of reading ±0.002 mA)
- + Volts 0 to 30.000 VDC (0.015 % of reading ±0.002 V)
- + Pressure -12 to 300.00 psi
- + Qty = 2 Set

PT. LNS INDONESIA

Margomulyo Jaya B-22, Jl Sentong Asri, Margomulyo- Surabaya 60186

Phone: +62 31 7484280 | Fax: +62 31 7484281

info@lns.co.id

www.lnsindonesia.com

Instrument Tools



LUTRON LIGHT METER LX-1108

- + Large LCD display with bar graph display
- + 40.00/400.0/4,000/40,000/400,000 Lux
- + Lux, Foot-candle unit selection
- + Sensor meet C.I.E. spectrum, 2 filters
- + RS232, Hold, Record, Zero adjust
- + 4 light type selection, bar graph LCD
- + Qty = 2 EA



KESTREL-4000 - POCKET WEATHER

- + Measures Current Wind Speed, Maximum Wind Gust, Average Wind Speed, Temperature, Wind Chill, relative Humidity, Heat Stress Index Dew-point Temperature, Wet Bulb Temperature, Barometric Pressure Altitude, Density Altitude
- + Waterproof and floats
- + All instruments and accessories are completely assembled in the USA
- + Weight : 3.6 oz / 102 g
- + Dimensions : 5.0 x 1.8 x 1.1 in / 12.7 x 4.5 x 2.8 cm
- + Qty = 2 EA



KW06-304 - INFRARED THERMOMETER

- + Unique flat surface, modern housing design
- + Built-in Laser Pointer
- + Automatic Data Hold
- + Range -50°C to 750°C (-58°F to 1382°F)
- + Response time Less than 1 second
- + Resolution 0.1° up to 200° and 1° over 200°
- + Basic Accuracy $\pm 1.5\%$ of reading or $\pm 2^\circ\text{C}/\pm 4^\circ\text{F}$ (whichever is great)
- + Optical Resolution 12:1 Distance to spot size
- + Emissivity Fixed at 0.95
- + Qty = 1 EA



FLUKE 572-2 HIGH TEMPERATURE INFRARED THERMOMETER

- + Measure -30 °C to 900 °C (-22 °F to 1652 °F)
- + 60:1 distance to spot ratio with dual laser sighting for fast, accurate targeting
- + Current Temperature plus MAX, MIN, DIF, AVG temperature displays
- + Compatible with standard mini-connector K-type thermocouples
- + Adjustable emissivity and predefined emissivity table
- + Infrared and thermocouple temperature on backlit display
- + Last reading Hold (20 seconds)
- + High and low temperature alarm
- + USB 2.0 computer interface cable
- + Qty = 2 EA

PT. LNS INDONESIA

Margomulyo Jaya B-22, Jl Sentong Asri, Margomulyo- Surabaya 60186

Phone: +62 31 7484280 | Fax: +62 31 7484281

info@lns.co.id

www.lnsindonesia.com

Telecom Tools



EMERSON-475 - FIELD COMMUNICATOR

- + Full-color graphical interface
- + Long-lasting Lithium-Ion power module for days – not hours
- + Quick boot up and fast operating time
- + Universal support for HART, WirelessHART, and FOUNDATION fieldbus devices
- + ValveLink Mobile for powerful diagnostics on Fisher FIELDVUE digital valve controllers
- + Localized language versions of user interface
- + Accessory Kits for Field and Shop
- + Qty = 5 Set



BIRD 75-T-MN TERMALINE RF LOAD DC- 4GHz N(M)

- + Rated at 75 watts continuous with an impedance of 50 ohms.
- + Type N(M) or N(F) Connector. 0-4000 MHz.
- + Also available with other connector configurations.
- + Qty = 3 EA



BIRD 8201 TERMALINE DUMMY LOAD - 500W

- + 500 Watt Continuous Power (2Kw plus non-continuous)
- + 50 Ohm oil filled RF Coaxial Termination
- + Frequency range of DC to 2.5 GHz, with VSWR specified as DC to 1 GHz: 1.1 Maximum, 1 GHz to 2.5 GHz: 1.25 Maximum
- + Qty = 1 EA



ZM-104A IMPEDANCE METER

- | | |
|-------------------------|---|
| + Power Source | R6 × 4 (1.5 V DC × 4) |
| + Current Consumption | 39 mA |
| + Measurement Range | × 1 range: 5 Ω - 1 kΩ
× 10 range: 50 Ω - 10 kΩ,
× 100 range: 500 Ω - 100 kΩ |
| + Oscillation Frequency | 1 kHz, ±10 % |
| + Operating Temperature | -5 °C to +40 °C (23 F to 104 F) |
| + Accessory | Test leads ...1 set |
| + Measurement Category | CAT I |
| + Weight | 700 g (1.54 lb) (including carrying case, without batteries) |
- + Qty = 2 EA

PT. LNS INDONESIA

Margomulyo Jaya B-22, Jl Sentong Asri, Margomulyo- Surabaya 60186

Phone: +62 31 7484280 | Fax: +62 31 7484281

info@lns.co.id

www.lnsindonesia.com



TOOLS & EQUIPMENTS CATALOGUE

PT. LNS INDONESIA

- 📍 Margomulyo Jaya B-22, Jl Sentong Asri, Margomulyo- Surabaya 60186
- ☎ Phone: +62 31 7484280 | Fax: +62 31 7484281
- ✉ info@lns.co.id
- 🌐 www.lnsindonesia.com